

# BRIEF OVERVIEW OF CSIR'S GIS EXPERTISE

**Wind Atlas for South Africa**

**by**

**S Szewczuk**

**4 March 2010**

**Cape Town**



*our future through science*

# Human resources & software tools

70 staff members with GIS experience ranging from junior to senior levels

A range of spatial GIS tools are used including the following:

- ArcGIS
- ArcGIS server
- ArcInfo
- ERDAS imagine
- ENVI
- IDRISI
- GRASS
- Quantum GIS

# Spatial data framework, hardware & infrastructure

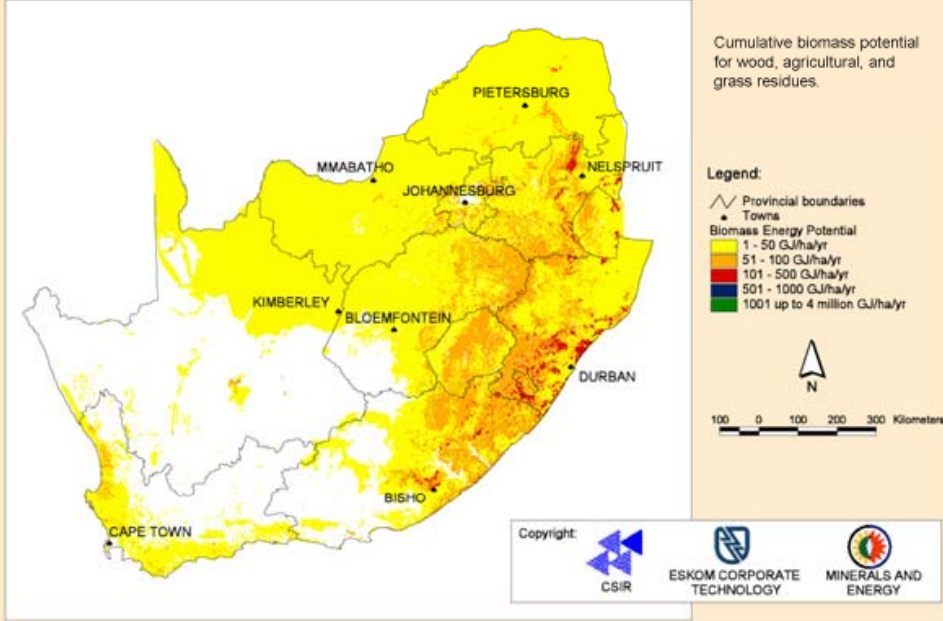
CSIR's spatial data infrastructure framework:

- Producer and (co)owner of several geospatial data products, example National Land Cover, SA Renewable Energy Resource Database (SARERD)
- Responsibilities under the Promotion of Access to Information Act, Legal Deposit Act, National Archive Act

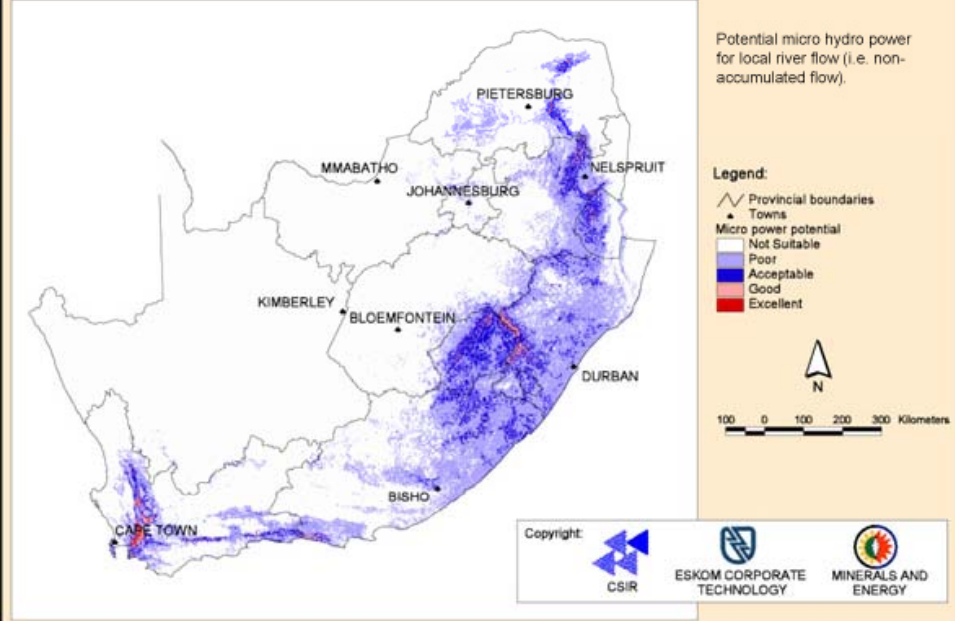
Hardware:

- UNIX
- Linux
- Personal Computers, Microsoft
- Linked to databases such as Oracle, SAS, MySQL, etc

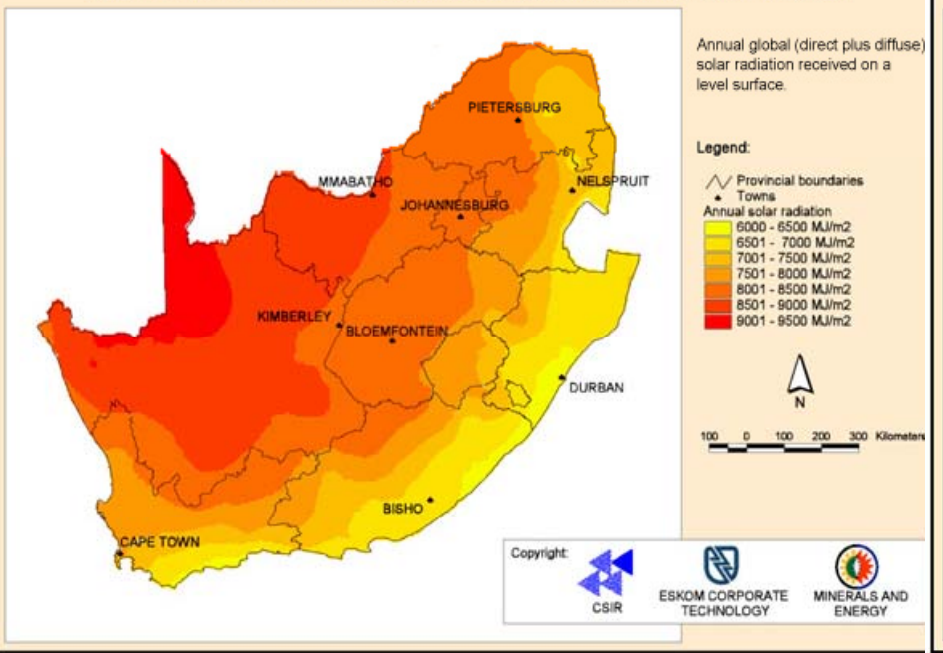
### South African Renewable Energy Resource Database - Biomass Potential



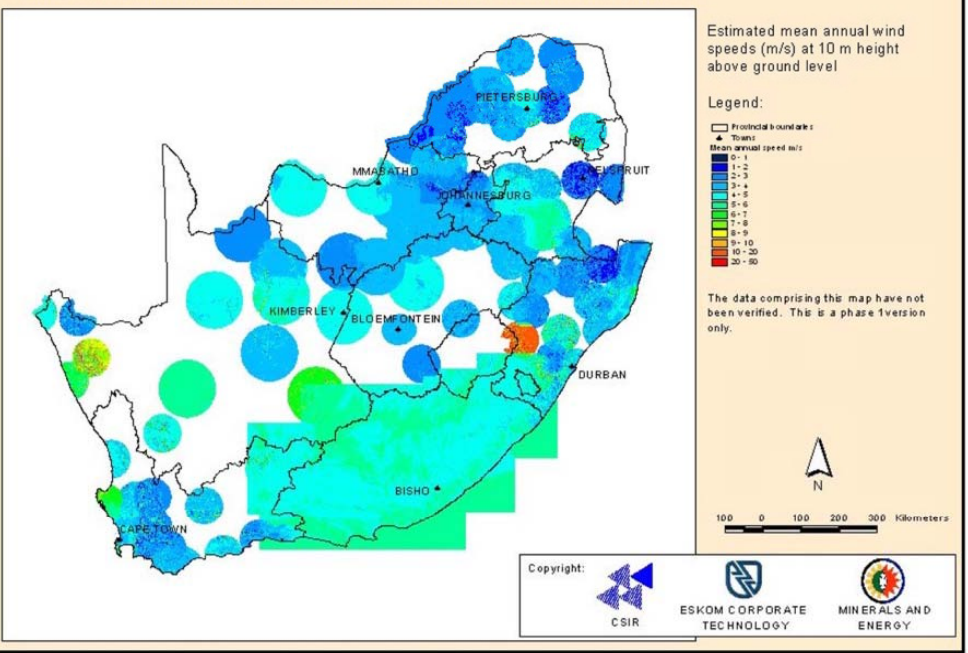
### South African Renewable Energy Resource Database - Micro Hydro Power Potential



### South African Renewable Energy Resource Database - Annual Solar Radiation

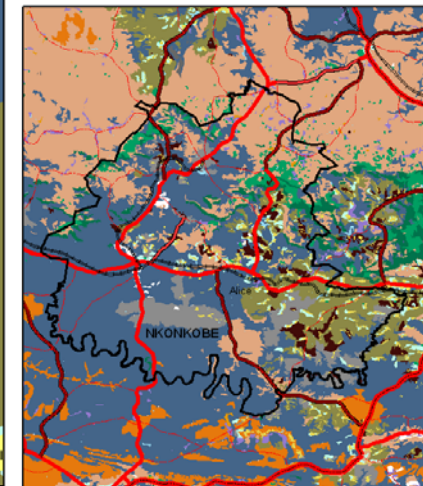
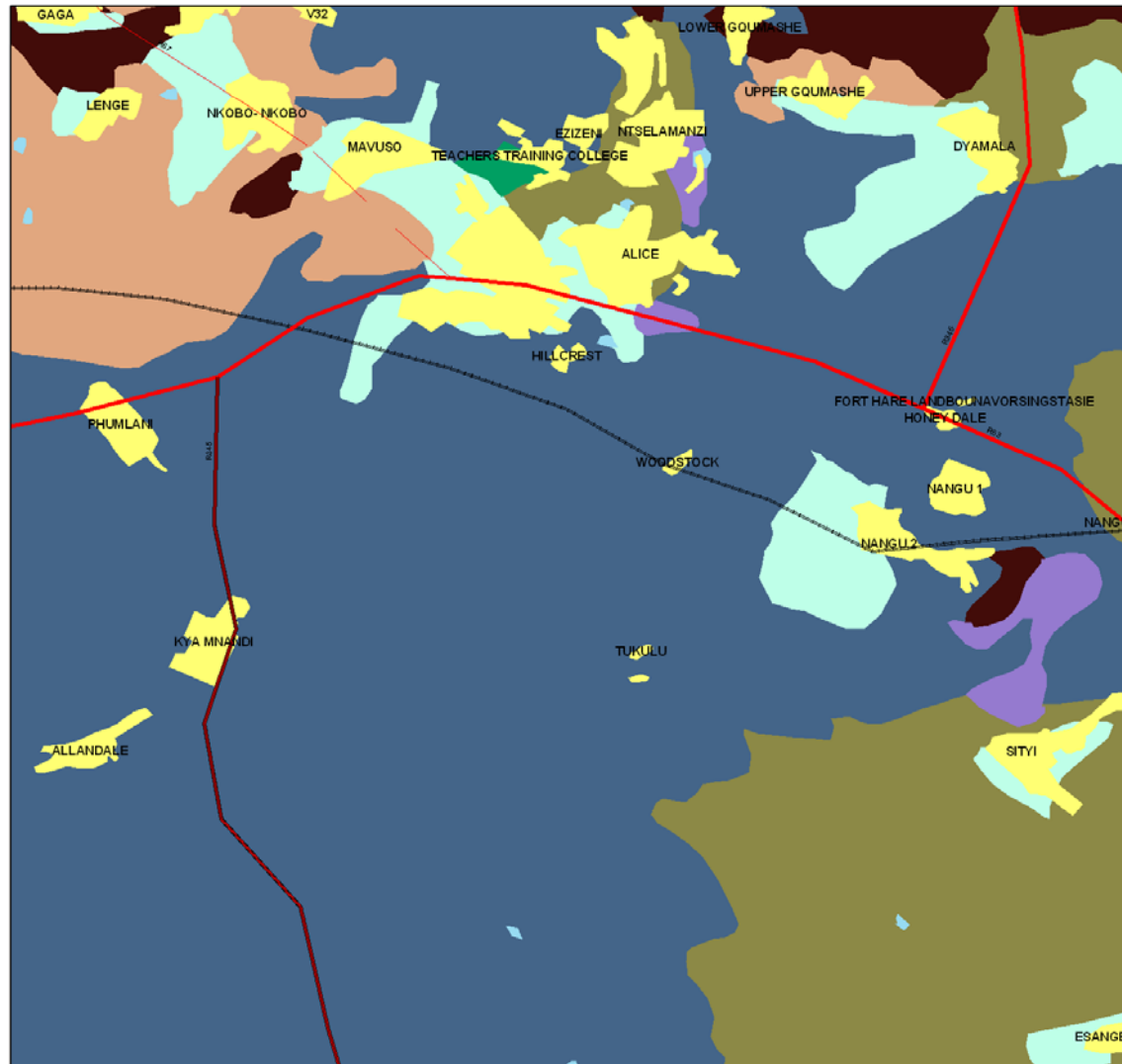


### South African Renewable Resource Database - Wind Resource



# Portion of land-use/land-cover dataset

## Landuse \ Landcover



THANK YOU

CSIR

*our future through science*